



etap

14.1

Installation Guide

*Redesigned to Deliver Unmatched Speed, Intelligence & Reliability
Boost Production by 50%*

ETAP 14.1 Release

ETAP 14.1 is a highly anticipated release developed to accelerate system design and analysis to boost modeling and analysis productivity by more than 50%.

ETAP 14.1 offers powerful new and enhanced features such as result analyzers, sizing, automated modeling and intelligent system evaluation tools to reduce engineering time, enforce standards, ensure design integrity, and optimize system operation.

Major Enhancements & Features

- 64-bit architecture and local SQL database
- Auto-Build
- Datablock & Theme Manager
- Star, Auto-Evaluation - Automated evaluation for protection & coordination
- Short Circuit Analyzer
- Contingency Analysis
- Updated Arc Flash Standards including NFPA 2015
- EMTP Interface with EMTP-RV and PSCAD
- Updated SmartPlant Electrical Interface
- AVEVA Electrical Interface
- Over 1000 Protective Device models

This document provides a step-by-step installation procedure for ETAP 14.1 and the User Guide. The installation program installs ETAP and all of its components including libraries, example projects, and ETAP help files. It also installs the ETAP License Manager since all stand-alone and network keys use this service to provide authorization for ETAP 14.1.

Activation Code

ETAP 14.1 will prompt you for a 48-character Activation Code located on the ETAP 14.1 DVD sleeve. If you cannot locate your code, please contact your sales representative at sales@etap.com.

Before Installing ETAP

1. You must have administrator rights to your computer. It is recommended to turn off the User Account Control (UAC) and the firewall during installation on Windows 7 and higher operating systems.
2. Close all other applications.

Installation Options:

DVD: Insert ETAP 14.1 DVD and run ETAPINSTALLER.exe

Online : To download the ETAP 14.1 release, login to ETAP Help Desk, using your valid Help Desk account.

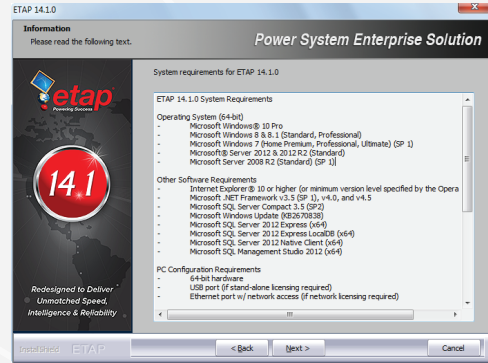
1. Log into your ETAP Help Desk account: support.etap.com
2. From the FAQ tab, click on **Download ETAP 14.1**
3. Double-click the downloaded file to launch the **Download Manager**
4. Once the download is complete, click **Launch** to install ETAP

Software Requirements:

ETAP requires the following prerequisite software. These software will be automatically installed if not detected.

- Microsoft .NET Framework v4.0
- Microsoft .NET Framework v4.5
- Microsoft SQL Server 2012 Express (x64)
- Microsoft SQL Server 2012 Express LocalDB (x64)
- Microsoft Windows Update (KB2670838)

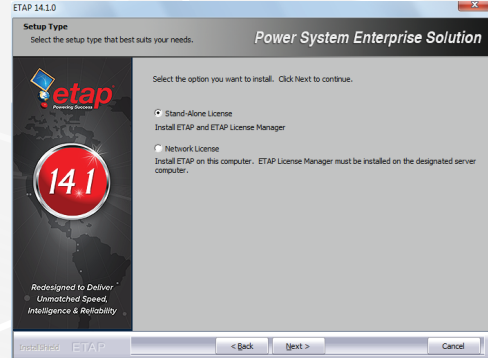
4. System Requirements



1. ETAP Installation Manager



5. License Types



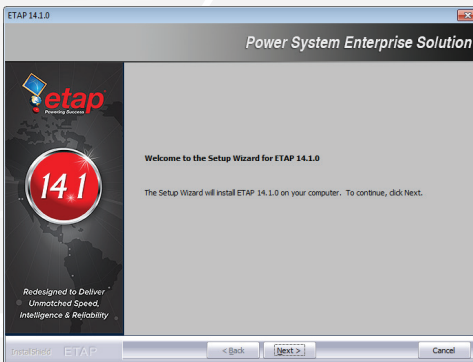
Stand-Alone License:

ETAP and ETAP License Manager will be automatically installed on the same computer. ETAP security key will be utilized.

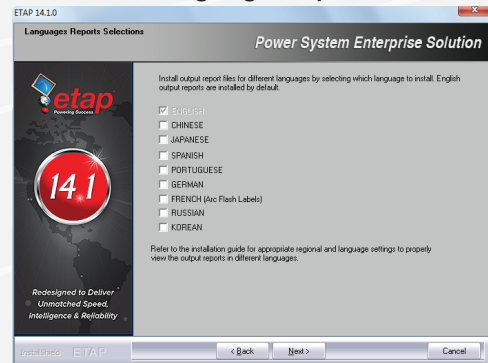
Network License:

Install the ETAP License Manager on a computer designated as the ETAP License Manager Server. In this configuration, the ETAP Security Key must be located at the ETAP License Manager Server.

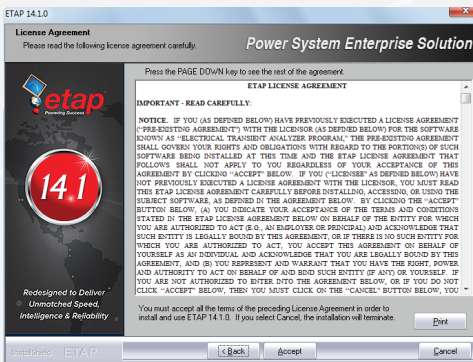
2. Welcome



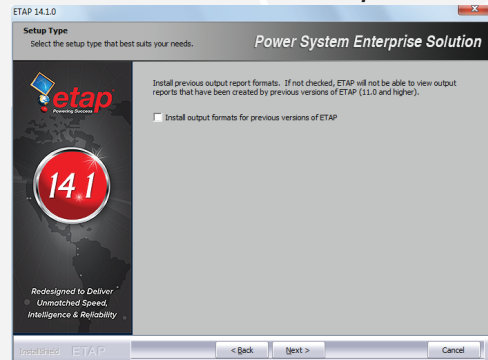
6. Language Reports



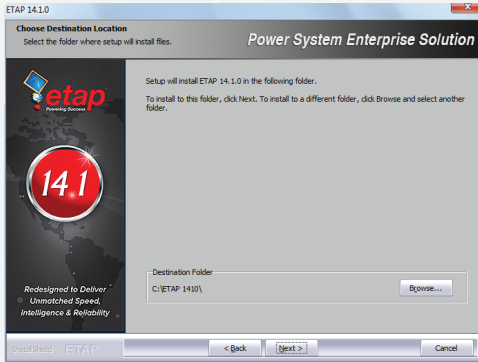
3. License Agreement



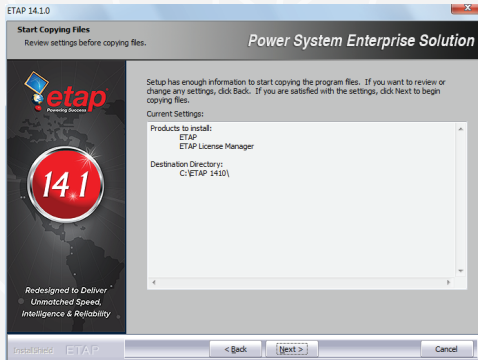
7. Previous Version Reports



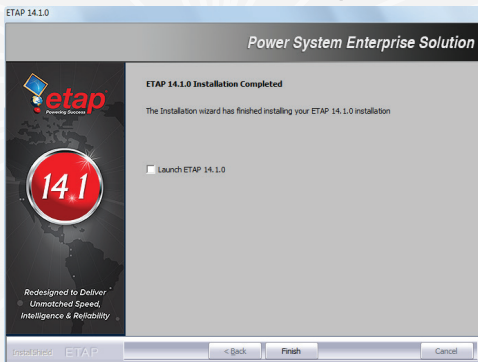
8. Destination Selection



9. Setup Review



10. Installation Complete

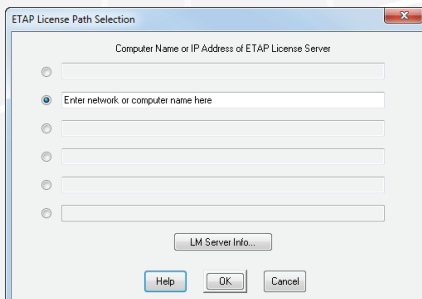


11. Restart Computer

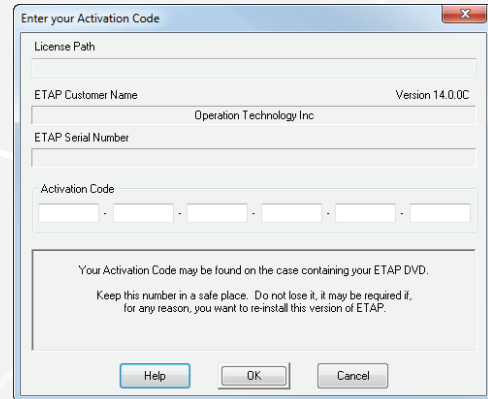
Launching ETAP

ETAP License wizard displays the ETAP License path selection editor. If a Stand-Alone or Network security key is located on your computer, click OK to continue. For a network license, if the ETAP Security Key is located on a different computer, select another path and enter the name or IP address of the computer where the key is located.

License Path Selection



Activation Code



Installing ETAP User Guide

To install the ETAP 14.1 User Guide, select the ETAP User Guide option that appears below the Installation section of the Installation Manager.

1. Click Next on the Welcome screen
2. Destination Selection
3. Installation Complete

Troubleshooting Licensing:

“ETAP key is not found or the License Manager is not ready”

- The ETAP License Manager is not installed in the designated computer.
- Install the License Manager and make sure there is no firewall interference.
- The ETAP License Manager Service is not running.
- Reset the License Manager from Start\All Programs\ETAP 14.1\Reset License Manager.
- The ETAP License Manager is installed in a Virtual Machine.
- ETAP prevents the operation of the License Manager on a virtual machine. This is due to the nature of virtual machines that makes it possible to replicate the ETAP License Manager in violation of its intended number of users per ETAP License Grant and Agreement. Please contact sales@etap.com for more details.
- ETAP key is not connected to the computer or key drivers are not installed properly.
- Verify that the key is securely attached to the computer. For more details, please refer to Chapter 2 of the ETAP User Guide.

● Condition ● Solution



System Requirements

Operating System (64-bit)

- Microsoft Windows® 10 Pro
- Microsoft Windows® 8 & 8.1 (Standard, Professional)
- Microsoft Windows 7 (Home Premium, Professional, Ultimate) (SP1)
- Microsoft® Server 2012 & 2012 R2 (Standard)
- Microsoft Server 2008 R2 (Standard) (SP1)

Other Software Requirements

- Internet Explorer® 10 or higher (or minimum version level specified by the Operating System)
- Microsoft .NET Framework v3.5 (SP1)
- Microsoft .NET Framework v4.0
- Microsoft .NET Framework v4.5
- Microsoft SQL Server Compact 3.5 (SP2)
- Microsoft Windows Update (KB2670838)
- Microsoft SQL Server 2012 Express (x64)
- Microsoft SQL Server 2012 Express LocalDB (x64)
- Microsoft SQL Server 2012 Native Client (x64)
- Microsoft SQL Management Studio 2012 (x64)

PC Configuration Requirements

- 64-bit hardware
- USB port
- Ethernet port w/ network access (if network licensing required)
- DVD Drive 10 to 80 GB hard disk space (based on project size, number of buses)
- 19" monitors recommended (dual monitors highly recommended)
- Recommended display resolution -1280 X 1024
- Recommended display font size - 100% - 125%

Recommended Hardware

100 Bus Projects

- Intel Core i5 or better – 2.0 GHz or better (or equivalent)
- 4 GB of RAM

500 Bus Projects

- Intel Core i5 or better – 2.0 GHz or better (or equivalent)
- 8 GB of RAM

1,000 Bus Projects

- Intel Core i5 or better – 3.0 GHz with Hyper-Threading & high speed bus (or equivalent)
- 16 GB of RAM (high-speed)

10,000 Bus Projects and Higher

- Intel Core i5 or better – 3.0 GHz with Hyper-Threading & high speed bus (or equivalent)
- 32 GB RAM - (high-speed)

ETAP Upgrade and User Support Maintenance Contract

All upgrades are automatically provided to users with a valid ETAP Upgrade and User Support Contract (UUC).

The UUC is the most cost-effective way to protect your ETAP investment by providing product upgrades and technical support for your ETAP software. Extending your maintenance support agreement will allow you the opportunity to apply ETAP's unique features and sophisticated analysis techniques to all your power system analysis projects. With a valid UUC maintenance support agreement, you receive:

- Free version upgrades including automatic shipment of new releases
- Unlimited access to user / technical support
- Latest device libraries updates
- Full access to ETAP User FTP and download sites
- Access to prerelease and beta versions of new products and upgrades

User Feedback

ETAP is dedicated to providing our customers with a superior product experience, and user feedback is one of the central elements of this commitment. In fact, ETAP is designed based on 95% of user suggestions and requests! We invite you to help us make a difference by filling out a short, single-page feedback form located at etap.com (click on User Feedback Form). All information is confidential and will be used only by the ETAP engineering and development staff.

ETAP Training

ETAP University training events include a wide-range of power system analysis workshops, seminars, and on-site training conducted by Certified ETAP Instructors. ETAP workshops in the U.S. offer Continuing Education Units (CEUs) and a 10% discount for IEEE members.

Visit etap.com to view the current events schedule. Events are added throughout the year, so be sure to visit frequently for the latest updates.

etap.com

Support: 949.462.0400
Main: 949.900.1000
support.etap.com

Registered to ISO 9001:2008



Certification No. 10002889 QM08