

This document provides a step-by-step installation procedure for

1. ETAP Software, including libraries, example projects, and help files
2. ETAP User Guide
3. ETAP License Manager, required for all stand-alone and network licenses

Installation Options

ONLINE

Download the new ETAP release via ETAP HelpDesk

1. Log into your ETAP HelpDesk account support.etap.com
2. From the FAQ tab click on Download ETAP and continue as prompted
3. Once the download is complete, extract the files and run ETAPINSTALLER.exe

DVD

Insert ETAP DVD and run ETAPINSTALLER.exe

Installing ETAP User Guide

To install, select the ETAP User Guide option that appears in the ETAP Installation Manager

1. Click Next on the Welcome screen
2. Installation Path Selection
3. Installation Complete

Before Installing ETAP

1. You must have administrator rights to your computer
2. Close all other applications.
Note: ETAP installation will automatically include engineering device library (.lib) and main program executable (etaps64.exe) into Windows Defender Exclusion List. This is to prevent Windows Defender from scanning the engineering library when linked to a project file

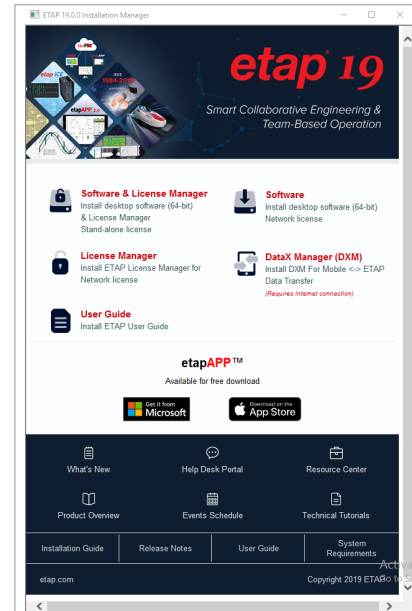
Activation Code

As needed, ETAP will prompt you for a software Activation Code, which is located on the ETAP DVD sleeve or provided to your IT contact via email.

Software Prerequisites

ETAP automatically installs prerequisites as needed. For a complete list of prerequisites, refer to the System Requirements section of this installation guide.

1. ETAP Installation Manager



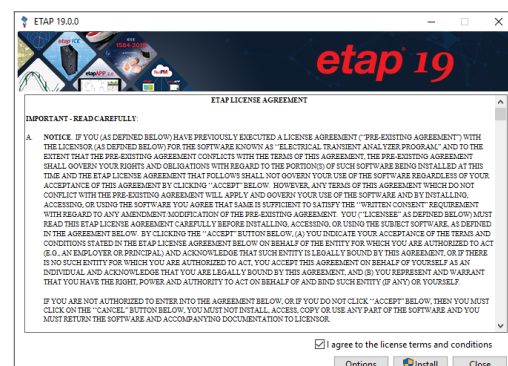
Stand-Alone License

ETAP and ETAP License Manager will automatically be installed on the same computer. ETAP Security Key must also be located on this computer.

Network License

Install the ETAP License Manager on a computer designated as the ETAP License Manager Server. In this configuration, the ETAP Security Key must be located on the ETAP License Manager Server.

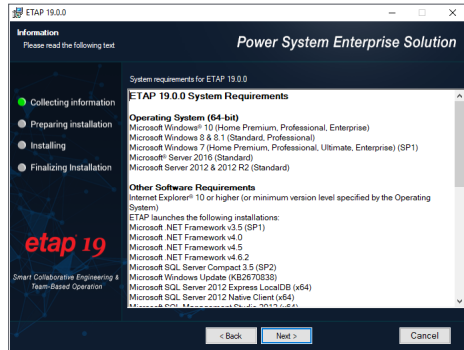
2. License Agreement



3. Welcome



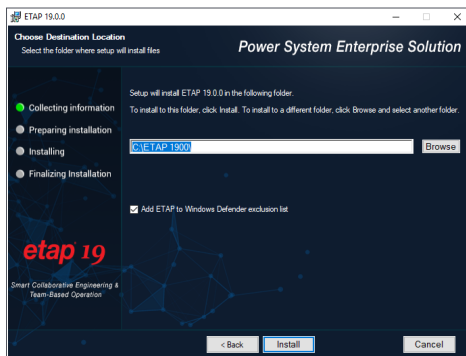
4. System Requirements



5. Previous Version Reports



6. Installation Path Selection



7. Installation Complete



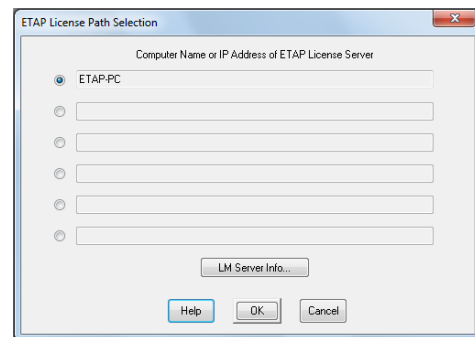
8. Restart Computer

Launching ETAP

ETAP License Wizard displays the ETAP License Path Selection Editor. If a stand-alone or network security key is located on your computer, click OK to continue.

For a network license, if the ETAP Security Key is located on a different computer, select another path and enter the name or IP address of the computer where the key is located.

License Path Selection



Activation Code

