



etap

16



etap

Install Guide

Boost Simulation Accuracy & Productivity

ETAP 16 Release - Major Enhancements & Features

ETAP 16.0 Model-Driven Power System Design & Operations Software expands on immersive system modeling and comprehensive simulation capabilities.

Multi-Language Edition - Localized

- English
 - Japanese
 - Russian
 - Spanish
 - Portuguese
 - Chinese
 - Korean
 - Italian*
 - Turkish*
- *Output Reports*

Cable Capacity Sizing - IEC 60092

- Size Power Cables based on IEC 60092 Electrical Installation in Ships & Marine Vessels
- Line Conductor Sizing
- Consider Short-Time Duty
- Selectable Annex B for General Installations
- Enhanced Reports and Cable Manager

Datablock

- New Intelligent Device Settings Datablock
- Auto-update Device Functions & Settings
- Export One-Lines and Datablocks to AutoCAD™ (DXF) Drawing Files

System Elements

- Motor Operated Valve Dynamic Voltage Limits
- Enhanced Overhead Line Impedance Calculations
- Enhanced IEC Fuse Ratings

Short Circuit

- Export Short Circuit Analyzer Results to MS Excel
- User-Defined Fuse Test PF and X/R for Short-Circuit Duty Evaluation

User-Defined Dynamic Models - UDM

- Blazing performance up to 50 X faster
- Enhanced Result Visualization with Multi-Scope
- Math functions with Multiple Inputs
- Enhanced Timer Integration
- Customizable Events for Test Routines
- New Generic Load Test Routines
- Go-To blocks for Internal and External UDM Communication
- C# Scripting using MIMO Function Blocks

Wind Turbine Generator

- New Control Block Test Routines
- New Complex Terminal Voltage Input Blocks
- Complex Terminal Current Output Blocks

Transient Stability

- Consider MOV Dynamic Voltage Limits
- Enhanced Generator Excitation Systems

Expanded Engineering Libraries

- Verified & Validated Libraries Included with Release
- Download Verified Libraries from ETAP HelpDesk

Enhanced Modules

- Data Exchange (DataX)
- Underground Raceway Thermal Analysis
- Dynamic Parameter Estimation & Tuning (DPET)

ETAP 16 Install Guide

This document provides a step-by-step installation procedure for ETAP and the User Guide. The installation program installs ETAP and all of its components including libraries, example projects, and ETAP help files. It also installs the ETAP License Manager since all stand-alone and network keys use this service to provide authorization for ETAP.

Activation Code

If you are installing the software for the first time, ETAP will prompt you for a 48-character Activation Code which is located on the ETAP DVD sleeve.

Before Installing ETAP

1. You must have administrator rights to your computer. It is recommended to turn off the User Account Control (UAC) and the firewall during installation on Windows 7 and higher operating systems.
2. Close all other applications.

Installation Options:

Online : To download the new ETAP release, login to ETAP Help Desk, using your valid Help Desk account.

1. Log into your ETAP Help Desk account: support.etap.com
2. From the FAQ tab, click on Download ETAP
3. Double-click the downloaded file to launch the Download Manager
4. Once the download is complete, click Launch to install ETAP

DVD: Insert ETAP DVD and run ETAPINSTALLER.exe

Software Requirements:

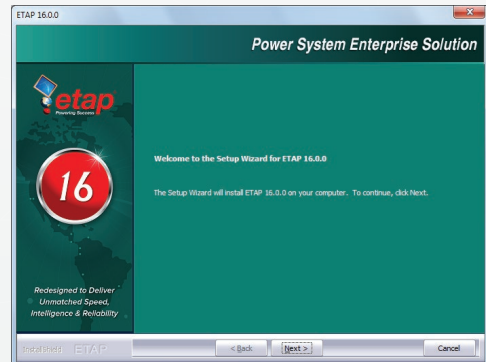
ETAP requires the following prerequisite software. These software will be automatically installed if not detected.

- Microsoft .NET Framework v4.0
- Microsoft .NET Framework v4.5
- Microsoft SQL Server 2012 Express LocalDB (x64)
- Microsoft Windows Update (KB2670838)

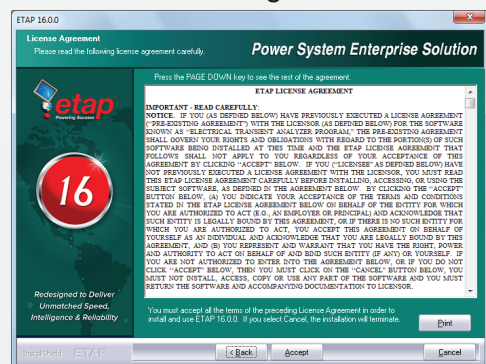
1. ETAP Installation Manager



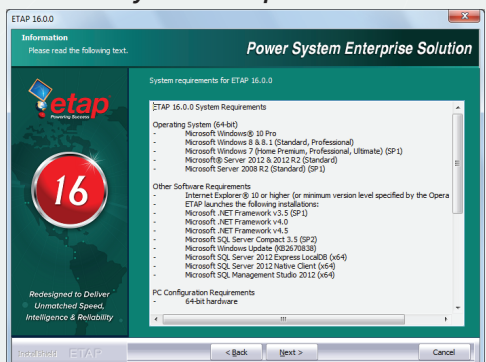
2. Welcome



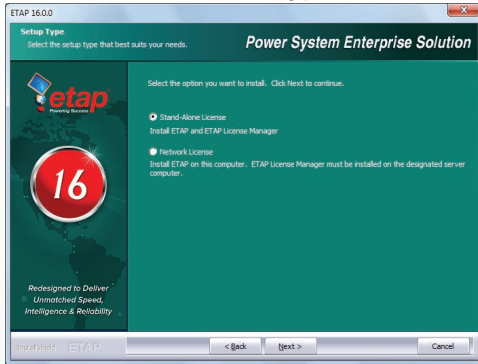
3. License Agreement



4. System Requirements



5. License Types



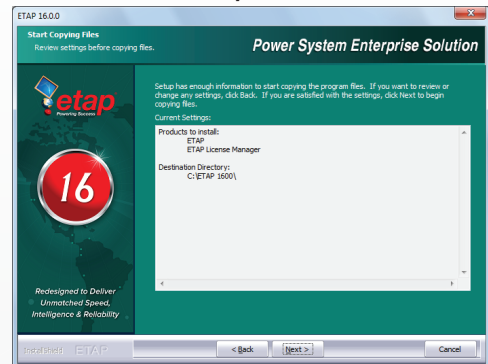
Stand-Alone License:

ETAP and ETAP License Manager will be automatically installed on the same computer. ETAP security key will be utilized.

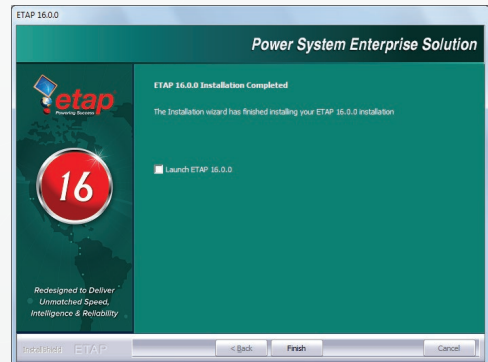
Network License:

Install the ETAP License Manager on a computer designated as the ETAP License Manager Server. In this configuration, the ETAP Security Key must be located at the ETAP License Manager Server.

9. Setup Review



10. Installation Complete

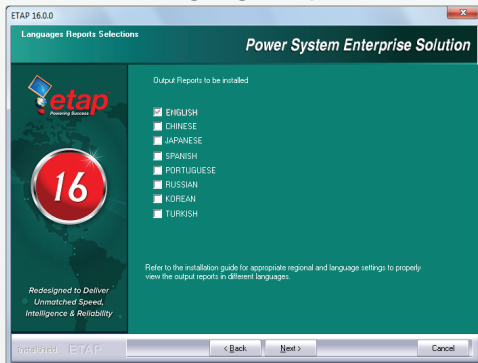


11. Restart Computer

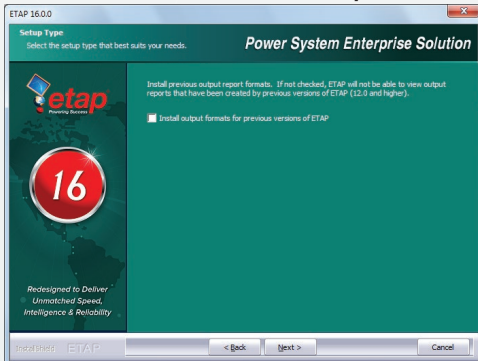
Launching ETAP

ETAP License wizard displays the ETAP License path selection editor. If a Stand-Alone or Network security key is located on your computer, click OK to continue. For a network license, if the ETAP Security Key is located on a different computer, select another path and enter the name or IP address of the computer where the key is located.

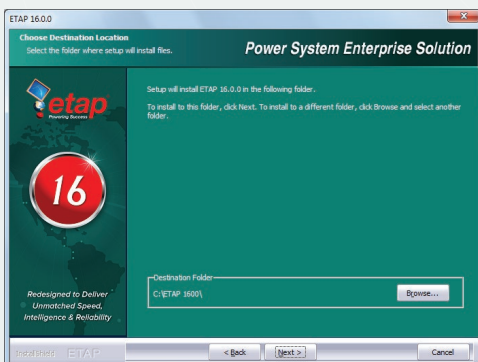
6. Language Reports



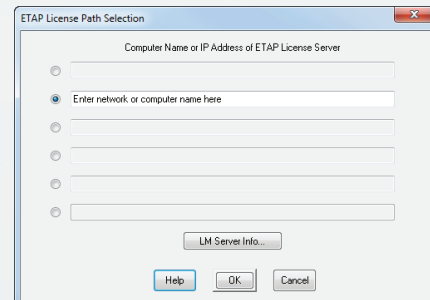
7. Previous Version Reports



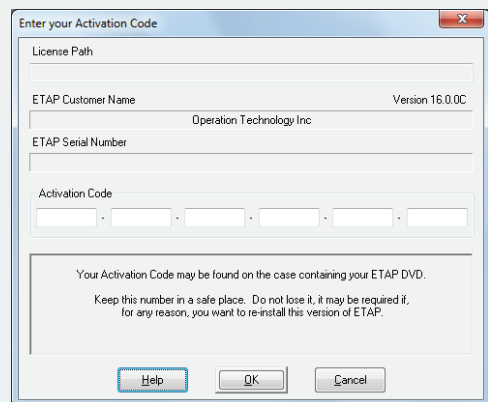
8. Destination Selection



License Path Selection



Activation Code





System Requirements

Operating System (64-bit)

- Microsoft Windows® 10 Pro
- Microsoft Windows 8 & 8.1 (Standard, Professional)
- Microsoft Windows 7 (Home Premium, Professional, Ultimate) (SP1)
- Microsoft® Server 2012 & 2012 R2 (Standard)
- Microsoft Server 2008 R2 (Standard) (SP1)

Other Software Requirements

- Internet Explorer® 10 or higher (or minimum version level specified by the Operating System)
- Microsoft .NET Framework v3.5 (SP1)
- Microsoft .NET Framework v4.0
- Microsoft .NET Framework v4.5
- Microsoft SQL Server Compact 3.5 (SP2)
- Microsoft Windows Update (KB2670838)
- Microsoft SQL Server 2012 Express LocalDB (x64)
- Microsoft SQL Server 2012 Native Client (x64)
- Microsoft SQL Management Studio 2012 (x64)

PC Configuration Requirements

- 64-bit hardware
- USB port
- Ethernet port w/ network access (if network licensing required)
- DVD Drive 10 to 80 GB hard disk space (based on project size, number of buses)
- 19" monitors recommended (dual monitors highly recommended)
- Recommended display resolution - 1920 x 1080
- Recommended display font size - 100% - 125%

Recommended Hardware

100 Bus Projects

- Intel Core i5 or better – 2.0 GHz or better (or equivalent)
- 4 GB of RAM

500 Bus Projects

- Intel Core i5 or better – 2.0 GHz or better (or equivalent)
- 8 GB of RAM

1,000 Bus Projects

- Intel Core i5 or better – 3.0 GHz with Hyper-Threading & high speed bus (or equivalent)
- 16 GB of RAM (high-speed)

10,000 Bus Projects and Higher

- Intel Core i7 or better – 3.0 GHz with Hyper-Threading & high speed bus (or equivalent)
- 32 GB RAM - (high-speed)

Installing ETAP User Guide

To install the ETAP User Guide, select the ETAP User Guide option that appears below the Installation section of the Installation Manager.

1. Click Next on the Welcome screen
2. Destination Selection
3. Installation Complete

Troubleshooting Licensing:

“ETAP key is not found or the License Manager is not ready”

- The ETAP License Manager is not installed in the designated computer.
- Install the License Manager and make sure there is no firewall interference.
- The ETAP License Manager Service is not running.
- Reset the License Manager from Start\All Programs\ETAP 16\Reset License Manager.
- The ETAP License Manager is installed in a Virtual Machine.
- ETAP prevents the operation of the License Manager on a virtual machine. This is due to the nature of virtual machines that makes it possible to replicate the ETAP License Manager in violation of its intended number of users per ETAP License Grant and Agreement. Please contact sales@etap.com for more details.
- ETAP key is not connected to the computer or key drivers are not installed properly.
- Verify that the key is securely attached to the computer. For more details, please refer to Chapter 2 of the ETAP User Guide.
- Verify only one key is used per license manager server.

● Condition ● Solution

ETAP Upgrade and User Support Maintenance Contract

All upgrades are automatically provided to users with a valid ETAP Upgrade and User Support Contract (UUC).

The UUC is the most cost-effective way to protect your ETAP investment by providing product upgrades and technical support for your ETAP software. Extending your maintenance support agreement will allow you the opportunity to apply ETAP's unique features and sophisticated analysis techniques to all your power system analysis projects. With a valid UUC maintenance support agreement, you receive:

- Free version upgrades including automatic shipment of new releases
- Unlimited access to user / technical support
- Latest device libraries updates
- Full access to ETAP User FTP and download sites
- Access to prerelease and beta versions of new products and upgrades

etap.com

Main: 949.900.1000
Support: 949.462.0400
support.etap.com

Registered to ISO 9001:2008



Certification No. 10002889 QM08