



Quick Installation Guide

Multi-Language Installation



The ETAP software interface language can be localized using the ETAP Language Update Setup. Follow the instructions in this section to enable this add-on feature.

Prerequisites & Notes

- PC must have corresponding ETAP software version installed
- PC Region and Language settings must match selected ETAP Language option
- ETAP Activation code for specific Language

Languages available with ETAP 24.0 Include:

- | | |
|----------------|-------------------|
| » Chinese (CN) | » Japanese (JP) |
| » German (DE) | » Korean (KO) |
| » French (FR) | » Portuguese (PT) |
| » Italian (IT) | » Spanish (SP) |



1. Download Language Update

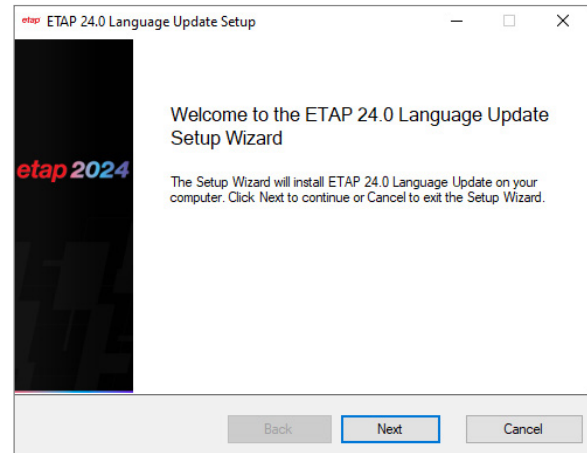
From [ETAP Help Center](#), download then extract ETAPLanguageUpdateSetup.zip

2. Launch Setup Wizard

Double-click extracted ETAPLanguageUpdateSetup.msi to run ETAP Language Update Setup Wizard

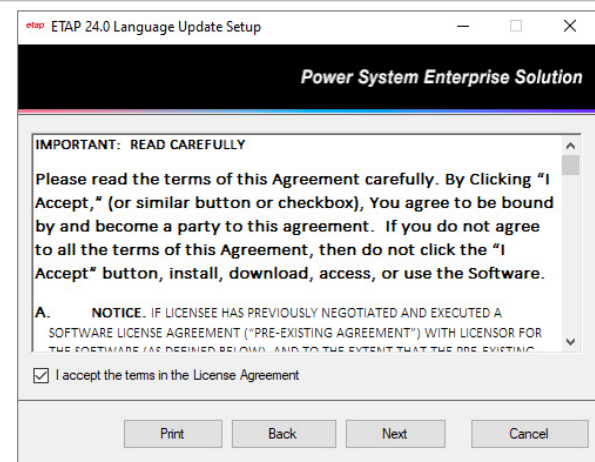
3. Welcome

In the **Welcome** page, click **Next** to continue.



4. ETAP License Grant and Agreement

The installation and use of ETAP is governed by the terms and conditions of the **ETAP License Grant and Agreement**. Check to agree to the license terms and conditions then click **Next** to continue.



5. Language Selection

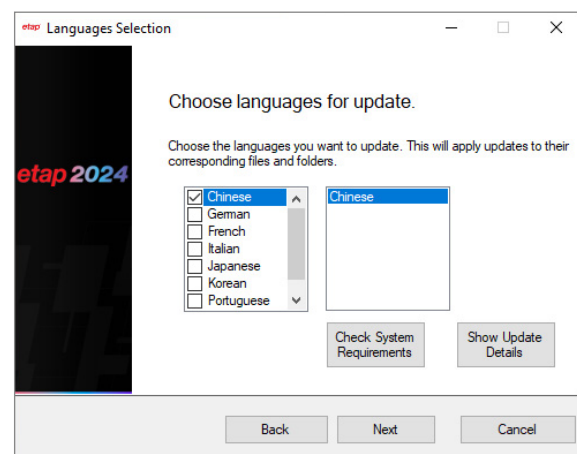
In the **Language Selection** page, check the desired language(s) and click **Next** to continue.
(Note, the languages list may vary per release)

View System Requirements

Click to view ETAP System Requirements in selected language.

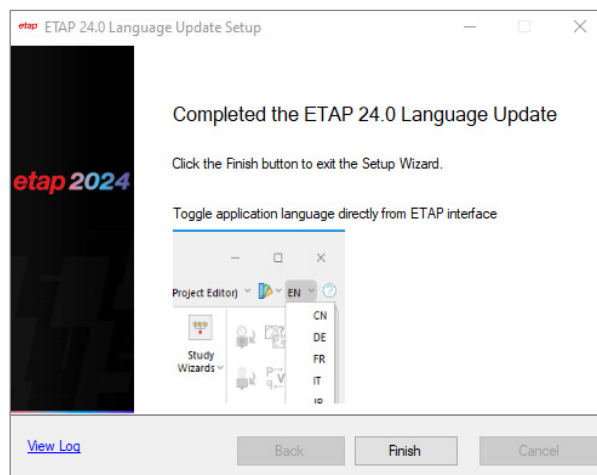
View Billboards

Click to view ETAP Feature Billboards in selected language.



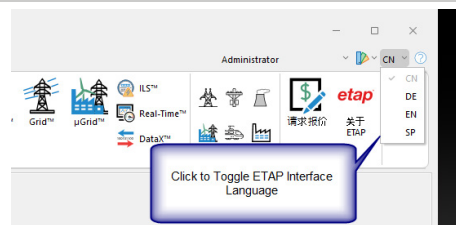
6. Finish Setup Wizard

Upon completion, click **Finish** to close the Setup Wizard. .



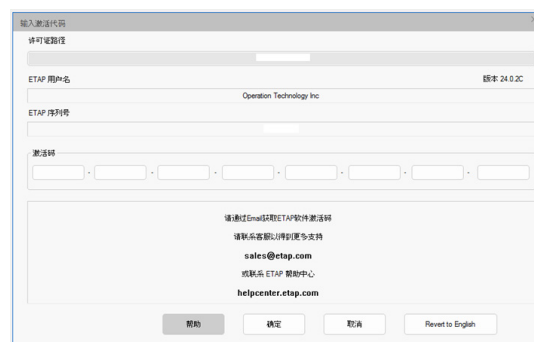
7. Language Interface

Launch ETAP and toggle Language interface option to desired language. Click **Yes** to continue



8. Activation Code

After the update is extracted and installed, ETAP will automatically be restarted with the selected language interface. When prompted, input the corresponding **ETAP Activation code** to complete the process and launch the program.



You're ready to get started using ETAP.